

**Harbingers of Spring**  
Big snowdrop weekend for local gardens

SEE PAGE 7



**Langholm athletes continue to shine**  
More Emirates success for girl stars

PAGE 16



# Eskdale & Liddesdale Advertiser

Series 2 No. 8573

Established May 1848

Thursday February 12, 2026

www.eladvertiser.co.uk £1.00

## Residents press for action at Langholm Flooding meeting

Mark Hallam reports on Community engagement event



Recent flooding swept down from Ashley Bank onto the A7

After four major flooding incidents affecting the A7 at Townfoot and properties at Holmwood, the long awaited Community Engagement Event with D&G Council officers took place on 4th February at the Buccleuch Centre. Two one hour sessions were attended by 27 residents representing the two badly affected areas: Holmwood, hit by water running off Meikleholm, and Townfoot, impacted by runoff from Whita Hill via Hall Path and Ashley Bank. Recent events carried gravel, mud, debris—and even golf balls—across Holmfoot House garden, around the old Sports Centre

and almost to Glenesk Road, again flooding the Holmfoot House cellar.

Thanks were expressed to Councillor Denis Male and Ward Manager Stuart Hamilton for organising the meeting, chaired by Executive Director Lisa Hawkin and Assistant Director Karen Brownlie. Councillor Archie Dryburgh joined via Zoom and contributed throughout. Alongside local homeowners, there were representatives from Ashley Bank and the Langholm, Ewes and Westerkirk Emergency Community Resilience Group. Retired engineer Roy Harley outlined serious concerns over gravel build up and

SEPA related constraints on riverside maintenance, posing risks particularly to George Street—the only part of the session focusing on river flooding rather than the more frequent surface water issues.

Another retired engineer and Hall Path resident, Neil Forsyth, highlighted technical failings of the Burnside and Ashley Bank storm drains, which now struggle even in modest rainfall. Once these fail, they quickly overwhelm all road drains below, creating multi day clean up challenges even when those drains have been recently cleared.

>Turn to Page 2

INSIDE

**Dolomites trip is a triumph!**



**F**antastic ski trip for Academy pupils and staff to Bardonecchia in Italy where they took to the slopes and had a wonderful time!

See centre pages for photos and a report.

# Family Announcements

## Deaths

### AITKEN, Alec

Suddenly at Dumfries Royal Infirmary on 4th February aged 86. Beloved husband of Elma, proud Father, Grandfather and Great-Grandfather. A private service is to be held at Roucan Loch.

Shaun Turnbull Funeral Directors 07896 557941

### BELL, William Murray (Kobitowwycz) (Kobo)

Peacefully on Friday 23rd January in The Royal Victoria Hospital Newcastle William Murray Bell, formerly of Langholm.

Funeral service and cremation in Roucan Loch Crematorium Dumfries at 11am on Wednesday 18th February to which all friends are respectfully invited to attend. Family flowers only please. Donations in lieu if desired to Huntington's Disease.

## Funeral Services

**SHAUN TURNBULL** 24 HOUR  
LOCAL, INDEPENDENT, FAMILY PROFESSIONAL  
**FUNERAL DIRECTORS** CARE & SERVICE

28 LANGHOLM STREET  
NEWCASTLETON  
TD0 0DX

Chapels of Rest in  
Langholm & Newcastleton

PHONE: 07896 557 941  
EMAIL: shaurnturnbullfuneraldirectors@outlook.com



**Nicholson's**  
Funeral Directors  
(Independent Family Run)

Bank House, Longtown &  
33 High St, Annan

For a professional, compassionate  
and caring service

24 hours a day Telephone  
01228 791098 or 01461 759214

Chapels of Rest  
in Langholm, Annan & Longtown  
Pre-paid Funeral Plans available



The Eskdale & Liddesdale Advertiser is part-funded and supported by the following charitable trusts, organisations and individuals from the community of Langholm.

- The Ainslie Charitable Trust
  - The BGS Cayzer Charitable Trust
  - Crossdykes Community Benefits Ltd, administered by Foundation Scotland
  - Dumfriesshire East Community Benefit Group
  - The John Hammond Charitable Trust
  - The Stevenson Trust
- 

## Church Notices

ESKDALE & LIDDESDALE PARISH linked with CANONBIE United Parish Church

### Welcome to worship

**Sunday  
15th February**

Services led by  
**Rev Morag Crossan**

**CANONBIE  
9:30am**

**LIDDESDALE  
11am**

Services led by  
worship teams

**LANGHOLM 10am**

Contact us for  
transport to/from  
Langholm service  
Tel. 07989168299

Rev Morag Crossan  
Tel: 07861 736071

or email  
mcrossan@  
churchofscotland.org.uk

# Eskdale & Liddesdale Advertiser

Contact us at the E&L: Office 013873 80012  
Editor Alan Weatherstone Features Editor Gilly Fraser  
All correspondence to: newsdesk@eladvertiser.co.uk

## Fly-tipping AGAIN!

Twice in one week, residents have posted photos of more fly-tipping on the old A7 at Auchenrivock.

Again, the rubble looks like that of a builder or tradesman that has been working on a house and has just decided to dump the rubble on the side of the road in a layby and also at the entrance to a farmers field, rather than dispose of it in the correct way.

If it is from a local building, does anyone recognise any of the panelling etc?

These photos were supplied by Helen Foster of Langholm.

If you see any more examples of this, please send your photos in to the E&L.



## Holmwood residents' 10 year wait

<From Page 1

The sessions were well chaired, discussion wide ranging, and all attendees were able to contribute. Minutes were taken by Caitlin Wallace, D&G Community Learning and Development Worker. Officers explained that this meeting focused on information gathering, with solutions to be developed at future follow ups. However, there was frank recognition of failures in existing flood management—from storm drain breakdowns and road drain maintenance problems to communication and emergency response issues. There was support for establishing a clearer single point of contact with better triage

and for seeking improved support from Traffic Police, whose absence was noted during the severe A7 flooding on 3 Oct and 17 Dec—events potentially qualifying as major incident level road closures.

Short term “quick win” drainage measures were discussed alongside the need for longer term solutions. Holmwood residents noted that similar promises 10 years ago produced no results; the chair acknowledged this and expressed a commitment to better, more timely outcomes, though cautioning that budgets may impose limits.

“I was really pleased to come to Langholm last week along with Karen Brownlie, Assistant Director

of Transport and Infrastructure and hear from residents about the impact the recent flooding caused by surface water run-off has had on them and their properties. We discussed a range of short-, medium- and long-term options that residents felt would help reduce the volume of run-off.”

Lisa Hawkin, Executive Director of Economy and Infrastructure commented on the meetings as follows:

“Although the purpose of these sessions was to listen to residents to help inform next steps, without jumping to potential solutions at the meeting, Karen and I committed to Langholm being the first

town in the region to be visited by the new gully cleaners which are arriving this week.

“I also committed to speak to resilience partners to ensure any learning and improvement regarding our response to the recent events could be improved and will be fed back to residents on this in due course. I certainly found the meetings informative and worthwhile, and we have committed to coming back in three months’ time to provide residents with an update on a number of the areas that we agreed to look into further. I would like to thank everyone that attended and contributed to the discussion and look forward to seeing you again in three months.”

# Community Council grants of £1k available



Langholm, Ewes and Westerkirk Community Council has announced that grant funding of £1,000 per community group or organisation is now available.

Groups wishing to apply must email [lewccgrants@outlook.com](mailto:lewccgrants@outlook.com) to request an application form. The deadline for submissions is noon on Friday 27 February, with decisions expected to be made in mid to late March.

Chair of the Community Council, Stuart Clement JP, highlighted the positive impact the grants have already had within the area. He noted that since March 2025, the Community Council has awarded over £35,671 to groups and organisations across Langholm, Ewes and Westerkirk. Beneficiaries have

included Langholm Young Riders Club, Xcel Youth Trust, Langholm Day Centre, Langholm Christmas Lights, Langholm Rugby Club (for the repair of the bridge), The Buccleuch Centre, Ewes Hall Committee, Kate's Kitchen, and Langholm Toddlers Group.

Stuart said, "This round of funding does have a limited budget, but I would still urge as many community groups as possible to apply. If an application is not successful, it should not be seen as a slight against the group or used as a reason to criticise the Community Council. We will support as many organisations as we can that benefit residents and strengthen community life within the resources available."

# D&G Leader addresses affordable homes crisis

Council leader, Stephen Thompson on housing

Dumfries and Galloway Council has set out a series of measures aimed at tackling what it describes as one of the region's most pressing issues — access to secure and affordable homes.

The council recently declared a housing emergency in response to growing pressures on local residents. Officials say that delivering good quality, affordable housing is essential to supporting families, young people and vulnerable members of the community.

As part of its response, the council has committed to increasing the supply of affordable homes, bringing empty properties back into use and reducing homelessness through long term, stable accommodation rather than short term fixes. Work is also under way to improve town centres by refurbishing disused homes and encouraging people to live locally.

Council leaders highlight the region's changing demographics as a significant factor. Dumfries and Galloway continues to attract many people over the age of 55, but there are concerns that more needs to be done to keep or attract younger families and working age individuals.



Dumfries and Galloway Council Leader Stephen Thompson

They warn that without a balanced population, local communities could struggle to sustain schools, services and small businesses — the latter being described as the "engine room" of rural employment.

A key part of the council's strategy is the Empty Homes Plan 2026–2031. Around 8% of homes in the region are currently classed as ineffective — almost double the Scottish average — including long term empty properties, second homes and short term lets.

Please let the E&L know if you have a comment to make on this subject. Email: [newsdesk@eladvertiser.co.uk](mailto:newsdesk@eladvertiser.co.uk)

# NHS D&G under huge pressure

Staff across NHS Dumfries and Galloway have been thanked for their extraordinary commitment as new performance figures show how busy services remain.

A summary report highlights sustained pressure across urgent, planned and community care, driven by high demand, workforce shortages and increasingly complex patient needs. Deputy Chief Executive Dr Kenneth Donaldson praised staff for their professionalism, compassion and resilience during what he described as very challenging circumstances. Unscheduled care, delayed discharges and sickness absence continue to affect patient flow, though performance remains strong in areas such as cancer care, digital appointments and community services. Health leaders are urging the public to use services responsibly, while stressing that anyone needing urgent or emergency care should always seek help immediately.

# Bridge Results

1 Bob Francombe & Anne Hislop, 2 Nancy McLure & Anne Ferguson, 3 Jim Muir & Louise Grierson, 4, Derek Scott & Judy Pitchford, 5 Lorraine Morton & Aileen Graham, 6 Ann Smart & Barbara Addison.

# Writers Wanted!

To make the E & L a truly community and local paper we're looking for people willing to write on a wide range of subjects such as nostalgia ▪ sport ▪ farming forestry ▪ cookery or whatever else is your area of expertise!

Please get in touch if you are interested in contributing by emailing us on: [newsdesk@eladvertiser.co.uk](mailto:newsdesk@eladvertiser.co.uk) or by phoning the office on 013873 80012

# LTB training hard for Scottish Championships



The band pause for a photo during their arduous workshop

Langholm Town Band held a full day workshop, last weekend, working on Three Haworth Impressions with Jim Chamberlain, alongside our MD Chris Bradley.

Secretary Christine Calvert said "Huge thanks to Jim for his insight, guidance and time which was invaluable as we continue preparations for the Scottish Brass Band Championships in March.

"So much to take away, plenty to build on and exactly what we needed at this stage

"Also, a big thank you to Castleview Catering for preparing our buffet."

# Book your eyetest today

Personal care and attention from your first appointment with us. Spectacles and Contact Lenses to suit all budgets



[www.erichaganopticians.co.uk](http://www.erichaganopticians.co.uk)

Longtown  
Tel: 01228 791664  
Brampton  
Tel: 016977 42703

To advertise in the E&L Advertiser, please contact us on 013873 80012 or email [alan@eladvertiser.co.uk](mailto:alan@eladvertiser.co.uk)

# Mutual benefits as old and young meet

By Miss Nicol,  
Nursery Manager

There was a meeting of the generations on Monday when the children from Langholm Nursery visited the Thomas Hope Hospital.

The children and patients sang favourite songs together such as, "Incy Wincy Spider", "Katie Bairdie" and "Baa Baa Pink Sheep", as well as doing jigsaws, playing dominoes, colouring in and blowing bubbles.

The generation gap was bridged, and the children engaged and interacted with the patients throughout the visit.

Staff at the Thomas Hope all agreed that the visit was beneficial for the patients as the shared generational experiences is good for their health and wellbeing.

The interaction also helps with the rehabilitation of patients as it was a very calming experience and thoroughly enjoyable for

both the children and the adults. Intergenerational interaction, where young children and elderly people engage in shared activities offers profound mutual benefits. Seniors experience improved mental health, reduced isolation and increased joy whilst children develop empathy, communication skills and reduced ageism

These bonds promote lifelong learning, and boost self-esteem for both age groups



The Thomas Hope patients loved their visit from the Nursery children



# Benty SWI is stretched



Last week, the Westerkirk Women's Rural Institute met at the Benty Hall and were treated to a taster yoga session by Catriona Orr of Esk Yoga.

Catriona teaches classes in Langholm suitable for everyone. She explained how her teaching came about and how important it is to keep moving as we age.

With that in mind we did chair yoga which was very enjoyable with plenty of stretching and relaxation.

The yoga was followed by a welcome cup of tea, cake and a good natter. The group discussed the upcoming Westerkirk Snowdrop Walk taking place

on Sunday 15 February. The WRI will be providing home-made soup and bread followed by home baking. They also talked about the celebration of 100 years of the WRI.

They are planning to have an afternoon tea at the Buccleuch Centre with some entertainment. This will take place at the beginning of March.

The group's next meeting will be on April 7 at 7.30pm. Kate Elliot and Sheila Murray will talk about stick-making and horn craft.

Everyone is invited to join members at the Benty Hall to find out all about the SWI.

# Probus welcomes ward manager

Dumfries and Galloway Region is divided into four main areas namely Annandale and Eskdale, Nithdale, Stewartry and Wigtonshire. The first area is divided into three wards. Langholm is in the Annandale East and Eskdale ward which has three Regional Councillors (out of 43) and eight community councils. The manager for this ward is Stuart Hamilton who came last week to speak to Langholm Probus Club. Stuart is based in Annan and is a former Annan Cornet.

He said that his three main areas of responsibility are:-

1. Resilience in the community which was particularly important during the pandemic
2. Helping communities to acquire assets from the council e.g. Langholm Day Centre and the Police Station. Negotiations on the Old School have not produced a result as the community benefit does not exceed its value



News from the region:  
Ward Manager Stuart Hamilton

3. Support for community activities such as The Common Riding or Christmas Lights

Unfortunately, Stuart has no budget and has to apply to the Region and other organisations for financial support.

About 2/3 of the Regional budget of £512million is spent on government priorities mainly social work and education. The

other third is available for regional issues. Stuart said that an action plan for the Langholm/Canonbie area is nearly finalised so it is hoped there will be progress on some of the local challenges. However, he also mentioned that the Region has had to make significant cuts recently losing 17% of its staff and £135million off its budget

Some questions asked at the end of his talk included "what's happening to the Erskine Church?" "(nothing new) and "what's happening at The Kilngreen" (a high-speed charging facility is being created, and this will include improvements to the toilets). So, some good news for the town and it is to be hoped that it will lead to increased business activity.

All in all, this was an informative and well-presented talk by an enthusiastic young man who would like to improve the area, but one was left with the feeling that constraints weighed heavily on his ability to get things done.

Online subscriptions to the  
**Eskdale & Liddesdale**  
Advertiser

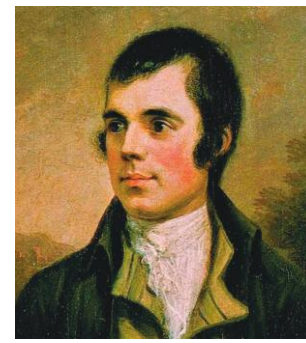
are now available at  
[www.eladvertiser.co.uk](http://www.eladvertiser.co.uk)

A new way to read the 'Langholm Paper'.  
Published weekly and available to read  
anytime and anywhere using multiple devices from  
mobile phone to tablet and laptop.

**GREAT IDEA FOR A GIFT! STARTING AT £1 A WEEK**



# Scottish poetry fest for Primary pupils



## Tax pressure on small businesses

Rising tax and cost pressures forced 25% of SME leaders in Scotland to lay off staff last year, according to Rathbones. Founders and senior executives say growing operational costs, including national insurance, are weighing heavily on firms and driving redundancies.

A Rathbones poll shows rising taxation and regulation are now major threats for 51% of Scottish SMEs, second only to overall cost increases (59%). With nearly a third of SME leaders holding over 25% of their personal wealth in their business, escalating costs are spilling over into personal finances. This is worsened by a rising personal tax burden. Frozen Higher, Advanced and Top income tax thresholds are increasing liabilities for salary-taking owners, while higher dividend tax rates are hitting those who extract profits via dividends.

Many are now reassessing how they take income. Kindar Brown, Senior Financial Planner at Rathbones, says higher taxes at both business and personal levels are squeezing entrepreneurs and making long-term planning increasingly difficult. Provide your feedback on BizChat

### Scottish Poems

Primary 4, 5 and 6 have been learning Scottish Poems. They recited them to their classes!

#### Primary 4

1st Place - Farryn  
2nd Place - Sebastian  
3rd Place - Connie  
Highly Commended: Amy, Penni, Lucy, Ceara, Kaydence and Alice

#### Primary 5

1st Place - William  
2nd Place - Penny  
3rd Place - Olivia  
Highly Commended: Louie, Kobe, Lexie and Ashley

#### Primary 6

1st Place - Nathan  
2nd Place - Rory  
3rd Place - Calum  
Highly Commended: Ellie, Rose, Seren, Kitty, Emmy, Elsie and Evie



Primary 7 spent a lot of time studying the life and work of Scotland's beloved poet, Robert Burns.

After studying his verse, each pupil took to the front of the class to proudly recite a chosen poem for a special guest judge, Nancy McLure from the Ladies Burns Club. The standard was incredibly high, but after much thoughtful deliberation, Nancy selected the following winners:  
1st Place – Murray,  
2nd Place – Martha  
3rd Place – Jayden

Highly Commended: Kai, Mustafa, Cameron, Mia, Daniel, and Sarah.

All three winners received vouchers and will have the exciting opportunity to perform their poems again for the Ladies Burns Club later this month. A huge thank-you to Nancy McLure for generously giving up her time to judge the competition, and to the Ladies Burns Club for kindly providing the prize funding. The pupils' enthusiasm and hard work made it a memorable celebration.

### OBITUARY

## Allan Johnstone Massie

“perhaps the finest Scottish postwar novelist”

October 1938-February 2026

Described by The Times last week as “perhaps the finest Scottish postwar novelist” Allan Massie was brought up in Singapore, educated in a gothic-style prep school in Kincardineshire before attending Glenalmond and then Trinity College Cambridge.

He returned to Kincardine's gothic Drumtochty as a teacher of English and the classics for 15 years before establishing a life with his wife in Rome – where he wrote about Italian politics – and, later about rugby – for The Scotsman.

His third novel, called The Death of Men – based on Italian terrorism – won a Scottish Arts Council Book Award.

Later, his A Question of Loyalties won the Saltire Society's book of the year award.

The history of Scotland fascinated him: after a spell in Edinburgh – when he mentored Ian Rankin, and championed both the works and political outlook of Walter Scott - he and his family settled into a Borders farmhouse.

He greatly appreciated spending his time in and around Selkirk and noted every success of Scotland rugby players John Rutherford and Ken Scotland. Among his



Allan Johnstone Massie at Selkirk Rugby Club  
October 1938-February 2026

many non-fiction books was his 1984 A Portrait of Scottish Rugby.

He frequently followed Border ridings with his children, wife and menagerie of dogs.

Honoured by France's Ordre des Arts et des Lettres he was appointed CBE in 2013.

### Contact John Lamont MP

Member of Parliament for Berwickshire, Roxburgh and Selkirk

✉ john.lamont.mp@parliament.uk

📘 JohnLamontBorders

☎ 01450 375948

🐦 @John2win

📍 John Lamont MP  
25 High Street,  
Hawick,  
TD9 9BU

📷 johnlamontborders

🌐 johnlamont.org

Sign up to my monthly e-newsletter



# Farming on the Border



In association with  
**C & D AUCTION MARTS - LONGTOWN & DUMFRIES**



## Blackburn and Hartsgarth:

Gilly Fraser finds out what 2026 has in store for Oxygen Conservation's Liddesdale estate



**2026 could see work begin on two major schemes on the Blackburn and Hartsgarth estate near Newcastleton if plans by landowners Oxygen Conservation get the green light.**

The flagship schemes centre on tree planting and peat restoration, both significant elements of Oxygen Conservation's overall vision for the 12,000-acre site bought from Buccleuch Estates in 2023.

Plans have been submitted to Peatland Action and to Forestry Scotland. Both are Scottish Government bodies.

Oxygen Conservation hope both will award grant funding to allow work to go ahead which will in turn convert to carbon credits which can be sold off to companies to offset their emissions.

Estate Manager Charlie Hill says peat restoration is probably the most exciting part of his work.

"We are hoping for approval for peat restoration next month and then work will begin in September. There's a lot of peat on the estate and a lot of work to do. I think peat restoration for me is probably the most exciting part. You can block a ditch or a gully and immediately see the water collecting there, so it's an instant result.

### Income

"Obviously we're a business and not a charity so we need to make money to stay alive and to buy more estates and keep the process going so this is a really big source of income for us but also does tremendous things for nature."

Once the relevant permissions

and grants have been received from Forestry Scotland, work will begin on erecting deer and stock fencing round parts of the estate, which has around 250 acres of existing woodland. Seventy per cent of that is native woodland, the rest is made up of conifer plantations. Work will also begin to tackle bracken.

Over the next few years, the plan is to plant around one and a half million native trees, and the list includes Oak, Aspen, Birch, Scots Pine, Alder, Rowan, Juniper and Hazel, as well as Hawthorn, Willows, Bird Cherry, and Holly.

"Obviously we want to see as many trees back on the land as possible, not least because the sheep have nibbled the trees away over hundreds of years, but the point isn't to cram as many in as we can possibly manage.

"We'll be using a tried and tested combination for this kind of terrain. We want the woodland to be as natural as possible and to bring it back to what it could have been in the past.

"We're adapting the mixes in certain areas to help birds and we've been working with the RSPB to find out what they want to see. We'll be keeping other areas open for Black Grouse and Hen Harriers.

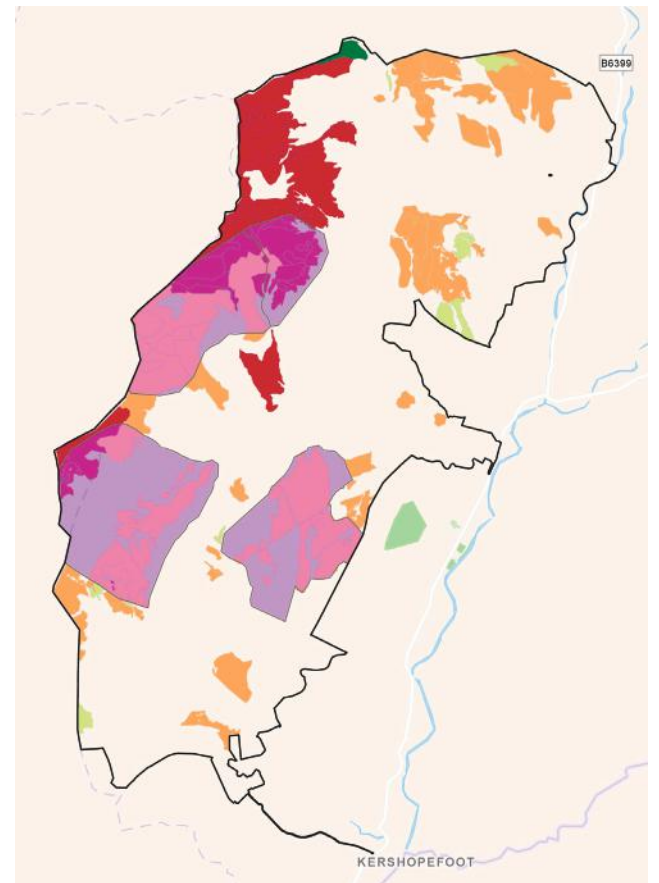
"We also work with archaeologists to preserve sites that are important to them."

Alongside work on peat restoration and tree planting, the team will also concentrate efforts on improving water courses on the estate – and there are plenty of them.

"Across the estate there are 194 kms of water courses. Hartsgarthburn, Blackburn and Tinnisburn are the main burns but there are also hundreds of tributaries. While a lot of the planting is going on around them, it's a chance to restore them as well.

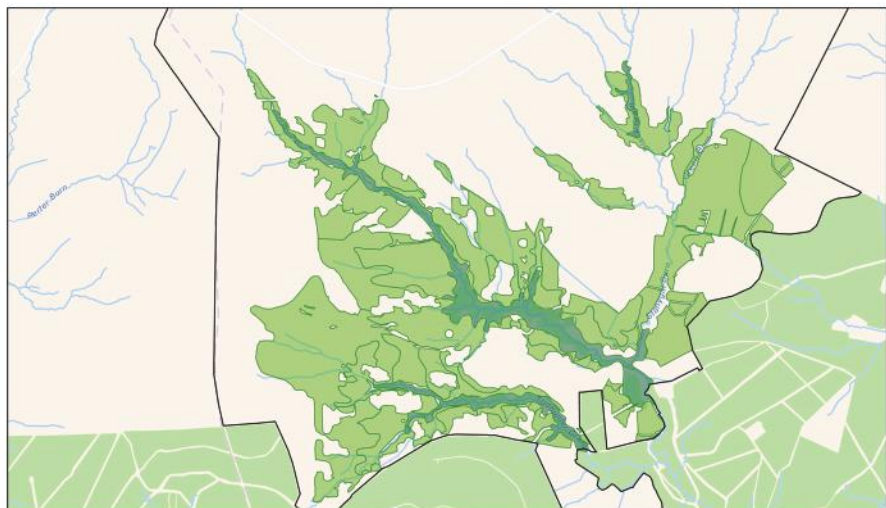
"Seeing the rivers recover is an integral part of what we're doing. So, over the next couple of years, we'll be doing things like putting big bits of wood in the water to slow the flow and create a dynamic flow so that salmon and trout can return and all the insects have little niches they can return to."

The estate team are planning an Open Day to be held in March and hope many members of the local community will take the opportunity to visit and find out more about the work being done.



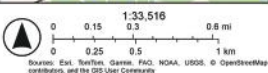
2/5/2026, 1:28:50 PM

- Portfolio Boundaries
- Drained: artificial
- Peatland Project Areas
- Modified
- Peat Condition**
- Actively eroding: hagg/gully
- Near natural



2/5/2026, 1:24:54 PM

- Portfolio Boundaries
- Existing woodland
- WCC Woodland Creation
- Tree Planting

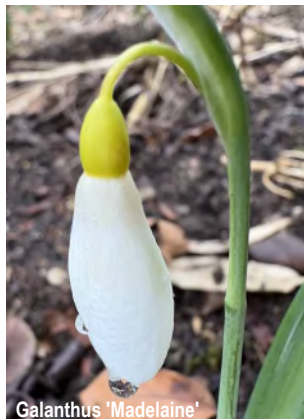


# Floral harbingers of spring

Gardening columnist Helen Knowles in praise of the humble snowdrop

**F**ebruary sees one of the harbingers of spring reach its glorious peak, carpeting the winter-bare ground with drifts of snowy-white, sweetly perfumed flowers. It is of course the common snowdrop, *Galanthus nivalis*. *Galanthus* is derived from two Greek words meaning 'milk' and 'flower' referring to the white petals while *nivalis* comes from the Latin word for 'snow'.

Snowdrops became hugely popular here in the 19th century and they became associated with hope and purity, hardly surprising when you think of the small white flowers appearing during the late dreary winter months.



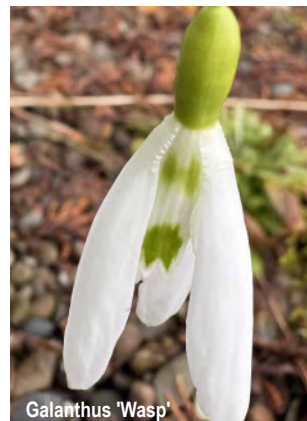
*Galanthus 'Madelaine'*

These little winter gems are not native to the UK and were first recorded in Britain in the 16th century where they were grown in churchyards for Candlemas Day (2nd February) and in Abbeys as a medicinal plant for the treatment of 'Mal au Tete', problems of the head. A chemical found in snowdrops, Galanthamine, is now used to treat Alzheimers.

While we tend to associate snowdrops with this time of year, and there is no doubt that the expansive white carpets of them in gardens across the country are truly spectacular, our naturalised *Galanthus nivalis* is part of a huge family. Their

natural distribution is from the Pyrenees in the West to the Caucasus and Iran in the East and South as far as Lebanon and the Peloponnese. Their flowering times are equally diverse with *Galanthus peshmenii* coming into bloom in the autumn in the Aegean. Being from the Mediterranean this species needs protection from the winter wet so is best grown in a cold alpine house or cold frame but there are late autumn/early winter flowering snowdrops that can be grown in the garden here. *Galanthus reginae-olgae* was named in honour of Queen Olga of Greece, the grandmother of the late Prince Philip, and will flower in October/November in UK gardens. This species does benefit from a sheltered location with good drainage and has a reputation for being tricky to grow but it and its many cultivars are highly sought after by Galanthophiles (people who really, really like snowdrops, sometimes to the point of obsession).

*Galanthus elwesii*, known as the Giant Snowdrop, is more readily available and is a little less fussy. Larger and earlier

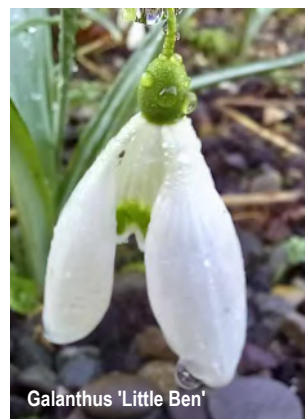


*Galanthus 'Wasp'*

flowering than *Galanthus nivalis* it is a useful addition to extend the snowdrop season. This species has also been the parent of some outstanding hybrids including 'David Shackleton' and the aptly named 'Fred's



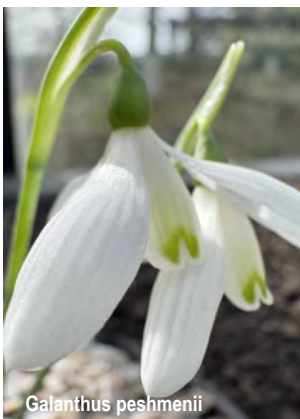
Giant' so if you have this species growing and flowering alongside other snowdrops in your garden you may be fortunate enough to produce an exciting new hybrid. In recent years some of the most desirable cultivars have changed hands for eye-watering amount of money, the record being set by *Galanthus 'Golden Fleece'*. This cultivar has yellow ovaries and markings on the petals instead of the usual green and single bulbs were being sold for £1,390. Things have calmed down a little since then and these days the price of one bulb ranges from £220 to £80.



*Galanthus 'Little Ben'*



*Galanthus woronowii*



*Galanthus peshmenii*



*Galanthus 'Nerissa'*



*Galanthus 'Green Arrow'*

...see for yourself this weekend



Snowdrops and aconites in abundance at The Craig, Langholm

If you want to enjoy the spectacle of drifts of snowdrops there are two local gardens open this weekend through Scotland's Gardens Scheme. Tinnisburn Plants is open Saturday & Sunday 10am to 3pm where there are plenty of *Galanthus nivalis* to enjoy as well as the ever increasing collection of cultivars, plus other winter flowering plants and shrubs. The Craig is renowned for extensive drifts of snowdrops and *Leucojum* (snowflakes) and will be open on Sunday 12pm to 4pm. For more details visit [www.scotlandsgardens.org](http://www.scotlandsgardens.org)



# Langholm Academy has fantastic ski-ing trip to Bardonecchia Bella Italia

## Young people gained so much in experience, confidence and skiing ability on their week on the slopes

**P**upils and staff from the recent school ski trip to Bardonecchia have returned with glowing reviews after a week of excellent snow conditions, cultural experiences, and impressive progress on the slopes.

S6 pupils Hollie Morgan and Hannah Jeffrey shared their reflections on the trip, highlighting both the social and educational benefits of the experience.

Hollie said the trip offered “a great opportunity to mix with other pupils and make new friends. The trip works well having a range of S1–S6 pupils.”

She also praised the cultural aspects, adding, “I really enjoyed experiencing a new culture and having the chance to try speaking Italian.”

Hannah commended the skiing experience itself, noting that “the instructors catered well for everyone’s abilities, which made skiing enjoyable for all of us.”

Both pupils agreed that conditions could not have been better, with Hollie adding, “The snow conditions were excellent throughout the trip.”

Reflecting on the week as a whole, she concluded, “I would definitely recommend the Bardonecchia trip to younger pupils and wish I was able to go back!”

The trip was led by Mr Ferris, Mrs Brown, Mrs Laidlaw and Mrs Skelton, who praised the group for their excellent behaviour, enthusiasm and maturity. Staff reported that all pupils showed “huge progression throughout the week” in both their confidence and skiing skills.

With the success of this year’s visit, staff and pupils are already looking ahead, with excitement building for the next planned trip in 2028.



By Gilly Fraser

# Encouraging noises for Holm's No8 Club

## A number of possibilities for future running of venue

Newcastleton's No8 Club has been undergoing something of a transformation over the past few months.

The building provides space for a number of community activities and is home to the popular Innov8 Club for younger members of the community.

In April last year the building was put on a list of venues at risk of closure in a review by Live Borders, the body which runs sport, leisure and cultural activities throughout the region.

Its future still isn't entirely clear but it's been reported that a Community Asset Transfer may be feasible in which it could request the ownership, lease or use of land from owners Scottish Borders Council. A new management model may also be considered to ensure long-term sustainability.

In the meantime, however, local Joiner Ian Nichol has carried out a range of practical improvements including improvements to office storage, installing a new smart TV (kindly donated by a local supporter), fitting shelving to safely store equipment, and completing several other much needed jobs.

WiFi has also been installed



Innov8 members after an activity session in the No8 Club

which opens up new opportunities such as movie nights and digital links with other youth projects.

Alongside this, the Club has been developing a project called Innov8 Plugged In. Organisers say rural isolation remains a significant challenge for many young people in the village and funding has enabled the No8 Club to be equipped with high

quality technology that can be used safely in a supervised environment.

"The project includes access to iPads, laptops, gaming equipment, coding kits and more. This technology will support digital inclusion, skills development and social connection. "Innov8 Plugged In will also strengthen our Youth Ambassador

Programme, enabling young people to be involved in village decision making, have their voices heard, and play an active role in shaping their future.

"There is a lot of positive work happening behind the scenes, and we are excited about what this means for our young people and the wider community."

## Edina Trust helps ELC

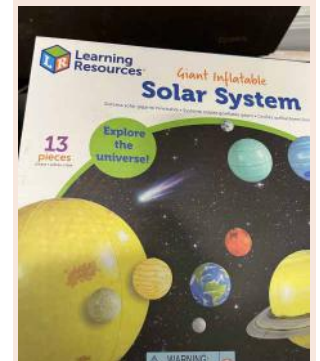
Hot on the heels of Newcastleton's Early Learning Centre achieving top marks for excellence in teaching STEM subjects, comes more good news.

The Primary School has been awarded a grant from the Edina Trust to buy more STEM resources.



The Edina Trust is a Scottish-registered charity founded in 2002 to support primary science education by providing non-competitive grants to state-funded schools, nurseries, and special schools.

Thanks to the grant, the school now has a light box, animal X-rays, measuring equipment, inflatable planets, baking bowls and trays, test tubes, colour paddles, safety goggles and tubes for construction projects.



## Village needs employment and community activities

Newcastleton needs more well-being and community activities and should create more opportunities to build employment skills, particularly for young people in the village.

Those were two of the ideas discussed at the recent Newcastleton and District Community Trust AGM.

The audience of around 45 included trustees, staff, volunteers, community representatives and young people, who gathered to hear about the past year's achievements and to discuss plans for the future.

Alongside the formal AGM business, the evening highlighted the vital role played by volunteers and local groups, with speakers emphasising that the village's strength lies in the commitment of its people.

The meeting also built on a recent consultation with local businesses about how best to promote Newcastleton as a destination for both residents and visitors.



Newcastleton and District Community Trust AGM

Attendees were invited to share their views on future priorities for the Trust.

It was also suggested that ways should be found to extend the current season by launching new events – and attendees felt that better use needs to be made of

community-owned land.

NDCT secretary George Porteus thanked everyone who attended, saying the AGM's success came from "bringing the right people into the room" and from their shared commitment to Newcastleton's future.

## Lack of volunteers forces Welfare Group's closure

A group which has helped countless older people in Newcastleton for more than half a century is being forced to close due to lack of volunteers.

The Welfare Group was set up in 1969, first of all to provide a Meals on Wheels service and to help older people with problems they might be facing.

Some years later a Car Scheme was set up by Joyce Bethune, wife of popular local doctor Arthur. It proved an invaluable lifeline for many, taking villagers to appointments at the hospital, dentist or optician which might have otherwise needed three bus trips each way.

The Car Scheme was shelved during Covid and although it did start up again, the number of available drivers had fallen too low to be able to operate.

The Welfare Scheme has also organised day trips, taken villagers to shows and pantomimes, organised monthly lunches and run keep-fit groups.



Members of the Welfare Scheme

Last year the group bought four recycled benches to be placed along the Riverside and provided disabled access tables for the Playpark along with two new benches.

It's been confirmed that some of the activities will carry on

but not as the Welfare Group. The group Chairman Janet Moore says she will continue to act as volunteer and will work with NDCT to continue supporting older members of the community as much as possible.

# LOCAL NOTICEBOARD

**CREATION MILL** W/C 16th Feb 2026

<b>Mon</b>	Quilters Group	10-1	Creation Mill, DG13 0ES
	Mending Monday	1-3	
<b>Tues</b>	After School Club	4-5:30	Creation Mill, DG13 0ES
	Langholm Evening In Stitches	6-8	
<b>Wed</b>	Welcome Wednesday	10-3	Creation Mill, DG13 0ES
<b>Thurs</b>	Creation Club - Picasso Portraits	10-1	Creation Mill, DG13 0ES
<b>Fri</b>	Langholm weekly In Stitches	1-4	Creation Mill, DG13 0ES
<b>Sat</b>	FellLoom workshop	10-3	Creation Mill, DG13 0ES

**Scrap Store is open Monday - Friday 10-3**

Booking required, please visit [CREATIONMILL.ORG/EVENTS](http://CREATIONMILL.ORG/EVENTS)

**Langholm Golf Club**

**AGM**

**Monday 23<sup>rd</sup> February, 7pm**

With follow-up report from last year's EGM and plans for junior golf development



**Langholm New Town Bowling Club**

**AGM**

**Monday 16th February - 7pm - Social Club**

President David Pool would like to update members on the exciting developments for the new season so a good turnout of members is required.

**WHAT'S ON IN FEBRUARY**

Sat 14th	Langholm Carpet Bowls U18s Singles & Pairs Tournament	Langholm Social Club 6.30pm
Sun 15th	Snowdrop Garden Open for Charity	Craig, Langholm DG13 0NZ 12pm - 4pm
	Westerkirk SWI serving soup & home baking	Benty Hall 12pm - 4pm
Mon 16th	Dementia Catch-Up Group	Langholm Day Centre 1.30 - 3.30pm
Wed 18th	Hard of Hearing Group Hearing Aid Maintenance	Langholm Day Centre 1 - 3pm
Thu 20th	Benty Hall Quiz Night	Benty Hall 7.30pm
Sat 21st	Langholm Musical Society Bake Sale	Pop-up Shop, Market Place from 9.30am
Sun 22nd	Eskdalemuir Expressive Arts Workshop with Helen Walsh	Eskdalemuir Hub
Fri 27th	Hard of Hearing Group Brew & a Bletcher	Langholm Day Centre 10.30am - 12 noon
Sat 28th	Canonbie United Parish Church Soup Kitchen & Table Top	Canonbie Public Hall 11.30am - 1pm

# The E&L General Knowledge Quiz

- No. 2606 answers next week
- On which river does the town of Godalming stand?
  - Which West Country cobbled quayside was used to portray that of 19th Century Liverpool in the TV series "The Onedin Line"?
  - Which statue was originally called the Angel of Christian Charity?
  - In which county is the world-famous Stoke Mandeville Hospital?
  - Where would you find the largest bell in Britain?
  - In which county would you find the Greenham Common base?
  - Which colourful festival is celebrated annually in Jersey?
  - What is the name of Birmingham's main central railway station?
  - As what are Stoke-on-Trent, Tunstall, Burslem, Hanley, Fenton and Longton collectively known?
  - In the 1950s, to what did the Dorset town of Piddletown change its name?
  - In which county is the Ravenglass and Eskdale Railway to be found?
  - On which river does the town of Ripon stand?
  - In which town is the regimental museum of the Green Howards located?
  - At what time of day does the Changing of the Guard take place at Buckingham Palace?
  - Which city has the postcode prefix of EH?
  - Which motorway would you use if you were to drive from London to Bristol?
  - The Pool of London is the name given to the River Thames immediately below which bridge?
  - In which National Park are the Preseli Hills?
  - To within 10 miles, how long is the Pennine Way?
  - In which county is the Alton Towers theme park?



# Crossword & Quiz Solutions from last week

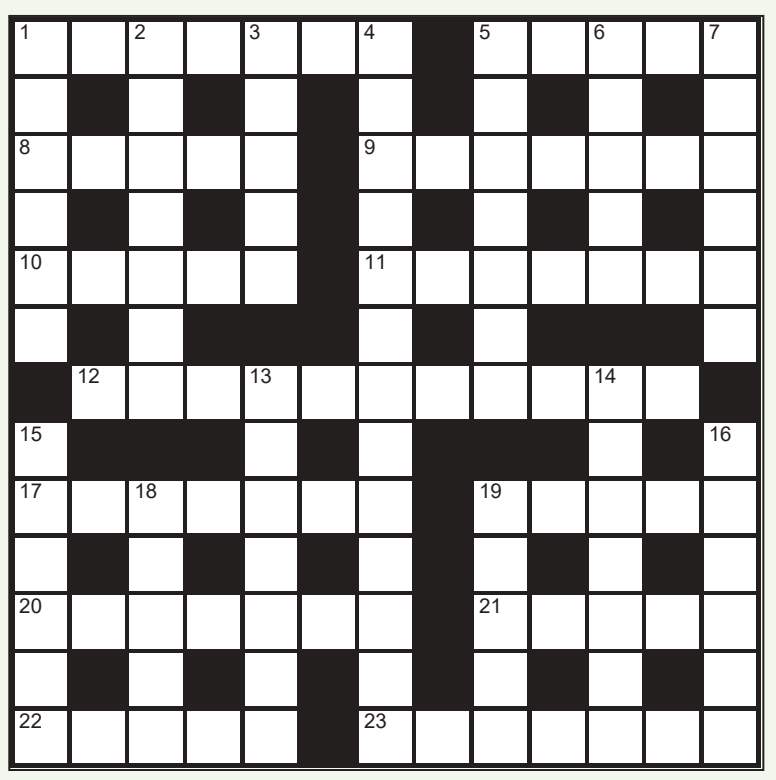
- Quiz 2605**
- River Clyde
  - York
  - West Sussex
  - Newquay
  - Westminster Abbey
  - Edinburgh
  - Victoria
  - Association of British Travel Agents
  - Seaweed
  - Exmoor
  - Murrayfield
  - Littlehampton
  - Strangeways
  - Sir Mordred
  - Great Ormond Street
  - 1956
  - Wimpy
  - Loch Ness Monster
  - Isle of Man
  - Craig

- Crossword 2605**
- Across:** 1 Scowl, 4 Ashen, 10 Arizona, 11 Irish, 12 Rind, 13 Dessert, 15 Lionhearted, 19 Beseech, 21 Nero, 23 Evict, 24 Enrages, 25 Heirs, 26 Herds.
- Down:** 2 Chianti, 3 Whoa, 5 Scissors, 6 Exile, 7 Sabre, 8 Paddle wheel, 9 Photo, 14 Ancestor, 16 Emerged, 17 Ebbled, 18 Goose, 20 Swipe, 22 Tree.

# NEVER A CROSSWORD!

No. 2606 answers next week

- Across**
- Vertical (7)
  - Stigma (5)
  - Stage play (5)
  - Apprehensive (7)
  - Rowdy (5)
  - Never-ending (7)
  - Pet Holstein dances about on the switch-board (11)
  - Volatile petroleum distillate (7)
  - Bishop or knight (5)
  - Esteem (7)
  - Lord ---, Prime Minister 1770-82 (5)
  - Squander (5)
  - Settled (7)
- Down**
- Sunk (6)
  - Make concrete (7)
  - Unearned gain (5)
  - Sympathetic (6-7)
  - Nurse! Go out for a doctor! (7)
  - Oak-to-be (5)
  - Snuggle (6)
  - Radical (7)
  - Scoffed (7)
  - Wander round an apostle (6)
  - Approach (6)
  - Mexican moolah (5)
  - Kind of room (5)



# Lang Syne in Eskdale

...David J. Beattie with mair kirk stoories

continued from last week

**“T**he next day” continues the writer “I took the post-bus from Langholm to Raeburnfoot and found myself in sole possession of the inside, but for mail bags – corpulent columns of canvas and a number of baskets and bundles.” Our friend had applied for the seat in front, next to the driver, but was told it had been promised to a lady who was shortly to be picked up. She proved to be a little elderly lady, carrying a cat in a basket.

The authoress’s description of her bus ride up the Eskdale road is in itself delightfully entertaining. “As we descended the valley” she writes, “showering parcels all along, I felt the reflected glory of being ‘the’ event of the day. The recipients were of every grade and class and age. Here was an adorable little girl with Venetian red hair. It must have been her birthday, for she had as many parcels as she could carry. We were high up above the river now and there were large houses in park-like grounds. The cat’s mistress in front, turned round to tell me of the lovely treats given to the Sunday School children by the old gentleman who lived in one of these.”

Surely this must have been Burnfoot, and the old gentleman



Burnfoot of Westerkirk and inset, William Elphinstone Malcolm

none other than the much respected and beloved William Elphinstone Malcolm, Esq, the venerable son of Sir Pultney Malcolm. What visions this brought of joyous Sunday School days over half a century ago, when as youngsters we travelled along the same road to the glorious picnic at Burnfoot, seated on planks laid crosswise on carts and wagons!

How vividly the memory recalls almost every detail of those happy occasions! – the various kinds of sports and games provided for young folk of every size; the hundred yards race, the three-legged race, the sack race, the wheelbarrow race, the egg-and-spoon race; the hurdle and pole jumping; and

every description of juvenile entertainment on the field for lads and lassies, suitably rewarded at the close of the events by dainty and useful prizes.

## Paper ‘pokes’

For the older and more venturesome boys there was the tall greasy pole to “speil” which offered a big and tempting prize to the successful climber. And, of course, there was a sumptuous feast of cakes and gingerbread in paper “pokes” supplemented, you may be sure, by mugs of well-sugared tea. What a never-to-be-forgotten sight, the happy beaming faces of several hundred bairns seated in parallel rows, on

the soft green grass of the broad meadow on a glorious summer day!

The feast over, how attentively we listened to a few fitting words of wise counsel and encouragement, so simply and lovingly given by that fine old Christian gentleman, Mr Malcolm, followed by the singing of a favourite children’s hymn, the joyous strains of which echoed and re-echoed among those peaceful Eskdale hills.

Then came our visit to the Burnfoot private museum with all its strange objects of interest. How clearly I remember the boyish thrill as we gazed with wonder on the relics of Napoleon, brought home, we were told, by Mr Malcolm’s distinguished

father, from the island of St Helena, where the warships of the Admiral kept ward and watch over his notable prisoner!

The gala day at Burnfoot over, then began our journey homeward in the same old springless carts and wagons – to us indeed, vehicles of comfort and luxury – carrying with us, not only the little prizes we had won at the sports, but best of all, the cherished remembrance of a summer outing brimful of the joyous realisation of a perfect day of sunshine and happiness, which, after well-nigh sixty years, has lost none of its charm and is still a gladsome memory.

With this pardonable digression we will resume our journey up the Eskdale road.

## The Fort at Raeburnfoot

A few miles run brings the bus to Enzieholm Bridge then on by way of Bailiehill to the King Pool, where the Black Esk and White Esk meet. Here is recounted the traditional story of the King Pool, of which an account will be given hereafter.

A little farther on we find ourselves in a region “scattered thick with forts, entrenchments, and stone circles, almost as far as Raeburnfoot”. Dr Christison, in his work “Early fortifications in Scotland” states that there are 41 forts in the Eskdale district. Of these are 20 in the parish of Eskdalemuir alone.

Looking back...

## C & D Marts (Longtown) Primestock Report Thursday, 5th February 2026

### CONTACT NUMBERS:

John Walton	07880 527 066
Daniel Lynn	07584 200 489
Nick Woodmass	07442 246 063
Sam Hogg	07584 207323
Norman Douglas	07786 366 833
Helen Rickard	07741 313 029



**C&D Auction Marts had forward an entry of 9,096 sheep comprising of 5,722 hogs and 3,374 cast ewes & rams at their weekly sale at Longtown Mart on Thursday 5th February 2026.**

### PRIME HOGGS

Another substantial show of 5,722 hogs sold to a very competitive ring of purchasers ensuring all classes saw another slight increase in trade in last week’s very high rates of return. Included in the market averages where again a substantial number of hills bred hogs which proved a joy to sell. Numbers handled with ease and are actively sought after on a weekly basis.

Heavy hogs seeing the same increased rates of return seen last week. Export weights and smalls proved in serious demand once again being in serious demand and way short of customer requirements once. Good commercial export weights again seen regularly trading 345-360ppk with the best exports 400ppk plus. Many more handy weighted sheep wanted by customer request.

Top price per head of £206 for Suffolks from A Batey, Heathery Knowe.

Top per kilo of 425p for Beltex hogs from Messrs Story, Hobbiesburn.

Please contact your auctioneers for further enquiries and entries.

Overall average 330.7ppk (SQQ 342.4ppk)

### Principal prices (Per head)

**Suffolk** - £206 Heathery Knowe, £204 Moss View, £198 Quarry House, £192 Kilnford Croft, £178 Maidenbots & Airyhassen, £176 Quarry House.

**Beltex** - £200 Whitecrook, Station Yard & Glenturk Farm, £196 Maidenbots, £188 Ballinloan, £186 Kilnford Croft & Maidenbots, £184 Kilnford Croft, Whitecrook & Station Yard.

**Texel** - £194 Aldery Terrace & Whitstonehill, £189 Airyhassen, £188 Station Yard & Lingey Field, £183 Culdoach & Maidenbots, £182 Whitstonehill, £181 St Johns Kirk, £180 Ireshope Plains.

**Dutch Spotted** - £189 Station Yard, £172 Carlisle Road.

**North Country Cheviot** - £185 Humbleheugh, £170, £162 Dalmakethar, £162 Humbleheugh, £160 Moss View, £152, £150, £148 Humbleheugh, £147 Dalmakethar.

**Mule** - £170, £166 Quarry House, £157 Culdoach, £154 Chesters Brae, £153 Dunjop, £152 Haining House, £150 St Johns Kirk, £149.5 Nunsleugh, £149 Grindon Hill & Finness.

**Rouge** - £165 New House.  
**Hill Cheviot** - £164 Mainside, £153 Dryfeholm, £152 Swanson & St Johns Kirk, £151.50 Plumpe Farm, £151 Roughet Hill, £148 Catslackburn & High Crubasdale.

**Cheviot Mule** - £161 Heathery Knowe, £151 Roughet Hill, £149 Grindon Hill & North House, £148.50 Fowrass Farm, £148 North House.

**Romney** - £161, £150 High Crubasdale.  
**Charollais** - £155 Mid Threave, £154 Dashwell Green, £150.50 Mid Treave, £146 Knowe Farm.

**Swaledale** - £151 Quarry House, £142 Orthwaite Hall & Maidenbots, £141 Longlea, £136 Low Stoke, £134.50 Devonport Farms.

**Herdwick** - £151 Heathery Knowe.  
**Lleyn** - £150 Cubby Hill.

**Blackface** - £150 Cowburnrigg, £149 Drumgrange, £147.50 Maryholm, £147 Cowburnrigg & Broathill, £145.50 Heathery Hill, £143.50, £143 Maryholm, £142 Drumreach, £141 Broathill & Merkland.

**Border Leicester** - £149 Culdoach, £147.50 Fowrass Farm.

**Dorset** - £142 High Crubasdale.  
**Half - Bred** - £132.50 Pilmuir.

### Principal Prices (Per Kilo)

**Beltex** - 425p Hobbiesburn, 422.2p Lingey Field, 417p, 409p Station Yard Station Yard, 408.7p Ballinloan, 400p Comlongun Mains, Kilnford Croft & Bridge End, 394.9p Lingey Field, 393p Kirkland of Longcastle.

**Texel** - 412.8p Gilnockie Tower, 394.7p, 392.5p Heathery Knowe, 389.5p Ballochgar, 386p Flathill, 381p High Crubasdale, 378p South Bogbain, 376p Coiliamy, 375.7p Swanson, 375p High Crubasdale, 374p Brae Edge, 372p Newtonhill.

**Suffolk** - 364p Latheron Mains, 363p Invercharron, Coiliamy & Newtonhill, 361p Coiliamy & Newton of Logierait, 357p Latheron Mains, 355p Riggfoot, 346p Prior Rigg & Corsencon.

**Hill Cheviot** - 361p, 359p Ireshope Plains, 358p Brae Edge & Heathery Hall, 357.9p. Ireshope Plains, 355.3p Copperthorns & Ireshope Plains, 353.8p Ireshope Plains, 352.6p Thornship.

**North Country Cheviot** - 357.1p, 346.9p, 346.2p, 336.4p Humbleheugh.

**Herdwick** - 354p Bridge End.  
**Blackface** - 350p Merkland Farm, 347.3p High Crubasdale, 347p Low Tirfergus,

345.9p Merkland Farm, 344p Westernhopeburn, 343p Maryholm, 341p Invercharron, 340.5p Maryholm, 340p Mid Dargavel & Cowburnrigg, 338.4p Heathery Hall.

**Charollais** - 342.2p Dashwell Green, 342p Mid Treave, 339.5p Knowe Farm, 332p Knowe Farm.

**Romney** - 348.6p High Crubasdale.

**Cheviot Mule** - 346.5p North House, 341.7p Catsackburn, 324p Mid Treave, 314p Grindon Hill, 315p North House, 304p.

**Half Bred** - 340p Pilmuir.

**Mule** - 340p Culdoach & Low Tirfergus, 338.1p Haining House, 337.5p Maind of Collin, 335p Barron House, 332p Corsencon, 330p Devonport Farms.

**Lleyn** - 340.9p Cubby Hill.

**Swaledale** - 330.2p Maidenbots, 318.9p Westernhopeburn, 315p Longlea, 314p Westernhopeburn & Devonport Farms, 310p Orthwaite Hall.

**Dorset** - 330.2p High Crubasdale.

**Easy Care** - 329p West Drummie.

**Dutch Spotted** - 320.3p Station Yard

**Border Leicester** - 314p Fowrass Farm

**Hampshire** - 304.2p South Bogbain

from TD & JR Byers, Cubbyhill, Longtown.

**Heavy ewes**

**Texel** £340, £300 Dinnans, £300, £280 West Stobswood, £270 Kirranrae & Beckfoot, £265 West Stobswood & Cubbyhill, £260 Whitecrook.

**Beltex** £315 St Johns Kirk, £290 Glenturk, £260 West Stobswood.

**Charollais** £285 Thackwood, £228 Beckfoot, £220 Newton of Logierait, £215 Lingey Field.

**Suffolk** £255, £232, £220 West Stobswood, £218 Airyhassen, £215 Comlongun Mains, £212, £210 Beckfoot.

**Blue du Maine** £238, £200 Lurgan.

**Mule** £215 Kirranrae, £210, £205 Airyhassen, £198 Kirranrae, £192 Low Mains, £190 Bonnyrigg.

**North Country Cheviot** £210 Baldovie, £186, £184 Beckfoot, £185 Skelfhill, £182 Dalmakethar.

**Bluefaced Leicester** £208 St Johns Kirk, £205 Culquhasen, £202 Beckfoot, £198 Kildalloig.

**Cheviot Mule** £186 Allfornaught, £185, £172 Marchbank, £170 Field Head & Flathill.

**Light ewes**

**Blackface** £164, £144, £142 Mains of Collin, £140 Hill Brae, £139 Mains of Collin, £135 Thornton Tower.

**Hill Cheviot** £155 Mainside, £146 Allfornaught, £145 Springwells, £142 Milnholm & Allfornaught.

**Easycare** £144 Peddar Hill, £138 Beckfoot.

**Swaledale** £119 Nunsleugh, £117 Hepplehill, £112 Broadmea, £110 Hepplehill & Gallowberry.

**Shetland** £118 Riggfoot, £100 Cop-

perthorns, £94 Newtonhill.

**Herdwick** £110 Maidenbots, £95 Whitstonehill, £92 Gallowberry.

**Rams**

**Texel** £255 Cubbyhill, £250 Mainside, £242 Beckfoot, £240 South Garpar, £230 Kingside.

**Bluefaced Leicester** £245 St Johns Kirk, £205 Falnash.

**Suffolk** £205 Thuster Mains, £188 Prieststhaugh, £182 Cubbyhill.

**Charollais** £200 Dinnans.

**Blue du Maine** £195 Kingside.

**Beltex** £190 Maidenbots, £185 South Garpar.

**Hill Cheviot** £175 Prieststhaugh, £172 Catslackburn, £170 Milnholm.

**Dutch Spotted** £175 Bogrie.

**North Country Cheviot** £172 Lower Gills & Garchew, £168 St Johns Kirk.

**Blackface** £168 Drumgrange, £158 Orchard Mains, £142 Garchew.

**Swaledale** £150 St Johns Kirk.

**Averages:**

**Hoggs**

Light to 347.0p (308.4p)

Standard to 422.2p (343.86p)

Medium to 425.0p (341.6p)

Heavy to 417.0p (316.97p)

**Ewes**

Light to £164.00 (£110.49)

Heavy to £340.00 (£156.27)

Rams to £255.00 (£156.51)





The E&L Gallery

E&L DOWN UNDER: The E&L's Mairi Telford Jammeh with her son William in Tarras Village on New Zealand's South Island

CAMERA: Samsung mobile phone

# Brandon bounces back to The Buccleuch

Get ready for a spectacular evening of country music as Brandon McPhee returns to Langholm to take centre stage with his full band, delivering the powerhouse sound that has made him one of the most exciting performers on the scene today. Joining him is the legendary Manson Grant of Manson Grant and The Dynamos, bringing decades of country heritage and showmanship to the stage.

The night features live performances from Brandon's brand new Christmas release, A Tribute to The Country Greats — a heartfelt celebration of the icons who shaped the genre. His rendition of Johnny Cash's Give My Love to Rose has already captured hearts worldwide, soaring past three million views on YouTube and earning a personal recommendation from Cash's own grandson. It's a moment of recognition that speaks volumes about Brandon's authenticity and talent.

Expect an evening packed with dazzling musicianship, warm storytelling, and the kind of variety that keeps audiences smiling from the first note to the last. From foot tapping classics to soulful ballads, this show delivers the full country experience with style and heart.

This is a one off event — a rare chance to see these exceptional musicians together on the same stage. Once it's over, it's gone.

**3 MILLION VIEWS & COUNTING**

**BRANDON MCPHEE**  
*"Give My Love to Rose"*  
 — HAS OFFICIALLY PASSED —  
**3,000,000 VIEWS ON YOUTUBE**  
 — AND IT'S STILL CLIMBING —  
 Thank you all for the love, the listens, and the incredible support. ❤️

the **Buccleuch Centre**  
LANGHOLM

**BRM PROMOTIONS**      **THE**      **HCVO7 HOT COUNTRY TV Multi Award Winner**

**BRANDON MCPHEE SHOW 2026**  
 with full band  
 incl. guest Manson Grant

**Thursday 19th. February 2026**  
**Buccleuch Centre, Langholm**  
**Box Office 01387 381196**  
**brandonmcphee.com**

**NEW ALBUM RELEASE**  
*"Tribute To The Country Greats"*

**To view show promo Scan Here**  
**brandonmcphee.com**

# E&L CLASSIFIEDS

The Eskdale & Liddesdale Advertiser  
 47A High Street, Langholm DG13 0JH  
 013873 80012 • alan@eladvertiser.co.uk

**TREE & FORESTRY SERVICES**



**A.S.H.**  
**FORESTRY & TREE SERVICES**  
 HEDGE & TREE PLANTING  
 TREE FELLING - PRUNING - REMOVAL  
 All Forestry Work Undertaken  
 CONTACT: 07495 992215 | ahoggforestry@aol.com

**SCRAP METAL**

**CUMBRIA METALS**  
**FARM SCRAP**  
**URGENTLY WANTED**  
 Wire • Tin  
 Machinery • Lorries  
 Cars • Vans  
 and all other scrap metal  
 Big or small  
 we remove it all  
 Registered Dealer  
 Call Patrick: 07979 877391



To  
 advertise  
 in the  
 E&L  
 Advertiser  
 please call  
 013873  
 80012

**PUBLIC NOTICES**

**PLANNING**

The applications, associated plans and documents can be viewed on-line by following the ePlanning link on the Council's website at [www.dumfriesandgalloway.gov.uk/planning](http://www.dumfriesandgalloway.gov.uk/planning). Written comments may be made to Head of Economy and Development by email to [Planning@dumgal.gov.uk](mailto:Planning@dumgal.gov.uk) or via the Council's website, as noted above, by 26/02/2026 (Type A).  
**Town and Country Planning (Scotland) Act 1997 as amended**  
**Town and Country Planning (Development Management Procedure) (Scotland) Regulations 2013, Reg 20(1) (A)**  
 Ref No/Type Address/Proposal  
 26/0047/FUL (A) Falcon Farm, Westwater, Langholm  
 - Erection of flight pen and trap rooms



**PROPERTY TO LET**

**OFFICES-STUDIOS-WORKSHOPS-STORAGE TO LET - LANGHOLM**

- Ashley Bank House
- The Old Post Office
- The Old Bakery, Well Close
- BFA - Enquiries welcome

for further information, please contact  
 Gillian McCartney, Ashley Bank House, Langholm DG13 0AN  
 Tel: 013873 81066 | email: [gillian@ashleybank.co.uk](mailto:gillian@ashleybank.co.uk)

**PROPERTY TO LET**

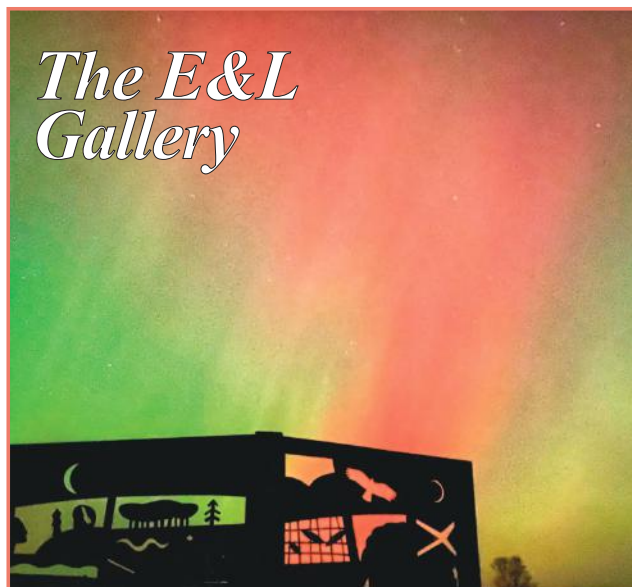
**DATS BLINDS**  
 3 Blinds for £160  
 (70 x 50)  
 Your local manufacturer of top quality blinds  
**FAST EFFICIENT SERVICE**

**Special Offers on Conservatory Blinds**    **Perfect fit blinds ideal for tilt & turn windows**

Vertical • Venetian • Roller • Roman • Blackout  
 Wooden Venetians • Pleated • Velux • Fly Screens

For a free, no obligation survey and to view our extensive range, call  
**01461 20 48 42** or  
**01461 20 61 48**  
 or text your name and contact number to  
**077 382 192 88**  
[www.datsblinds.co.uk](http://www.datsblinds.co.uk)

*The E&L Gallery*



Send us your photographs.....  
 we'd be happy to publish them  
 Email them to [alan@eladvertiser.co.uk](mailto:alan@eladvertiser.co.uk)  
 or drop a printed copy into our office at  
 47A High Street, Langholm.

Photo by: Stan Wilson

*Eskdale & Liddesdale Advertiser*

**GROW Your Business with the E&L!**

**Employers!!**

- Do you have vacancies to fill?
- Are you seeking to expand your business?

We have a wide readership covering Langholm and Eskdale, Newcastleton, Longtown, Annan and Lockerbie and very competitive rates.

To discuss your employment needs contact us on  
 013873 80012  
 or email [alan@eladvertiser.co.uk](mailto:alan@eladvertiser.co.uk)

Advertise in the E & L....  
 You'll be surprised how little it costs!



*Eskdale & Liddesdale Advertiser*  
 born in 1848 and still going strong!

*Eskdale & Liddesdale Advertiser*

**Advertise with the E&L**  
 it's cheaper than you think!  
 Call 013873 80012 for details

**E&L JOBS**

advertise in the E & L Advertiser  
 you'll be surprised  
 how little it costs

**The Eskdale & Liddesdale Advertiser**  
 47A High Street,  
 Langholm  
 DG13 0JH  
 013873 80012 • [alan@eladvertiser.co.uk](mailto:alan@eladvertiser.co.uk)

# Not Legion's day at Stow



By David Borthwick

**We travelled light again today to face Stow in the Forsyth Cup. 11 Players and a manager made the trip.**

Spirits were high before kick off but within 10 minutes we were a goal behind. Not the start we'd hoped for.

We hit back when Greig Cartner broke through the Stow defence. His shot was blocked but Danny Hotson followed up to level the score.

Before half time Brian 'Bazil Brush' Mattinson played Greig in who made no mistake when he tucked the ball in the corner. 2-1 Langholm.

The half ended 2-1 thanks to a few important stops from Derek Johnson who returned early after injury to help the team.

The second half didn't start well when the home side got a goal from a corner to draw level. Corners have been our downfall throughout the season.

Aaron Steele got us back ahead when he got on the end of a Greig Cartner cross, his volley beating the Stow keeper. 3-2 Langholm with around 30 minutes to play.

From this point it all went downhill. The game ended 7-3 to the home side.

We are back in action next week at home to Eyemouth

# Could you lend a hand at Langholm Youth Rugby?

## A little help would go a long way

Langholm Youth Rugby is a registered charity dedicated to giving local children and young people the chance to enjoy rugby in a safe, welcoming and supportive environment.

We are completely volunteer-run, from our coaches on the pitch to our board of trustees working behind the scenes to make sure the club is well-run, safe and sustainable. All of our coaches are volunteers, and many are parents coaching their own child's team — giving their time because they care about the kids, the sport and our community.

Like many grassroots clubs, we rely heavily on the support of parents and families to keep things running. Recently, we've found things a little more challenging and would really appreciate a little extra help. Volunteering doesn't require rugby experience or a huge time commitment — even small amounts of support can make a big difference.

Why getting involved matters:

- Helps keep training sessions running smoothly



- Shares the workload so no one feels overstretched

- Supports your child and their teammates

- Helps our young people grow in confidence, teamwork and respect

If every family helped in some small way, it would help secure the future of youth rugby in Langholm for all age groups.

Langholm Youth Rugby is a family-led, community-based charity, and we're always keen to welcome more parents and supporters — on the pitch, on the sidelines, or behind the scenes.

If you think you could help, even occasionally, we would love to hear from you.

Langholm Youth Rugby is contactable through Face book.

### EMERGENCY NUMBERS

#### POLICE SCOTLAND

Langholm .....101  
Newcastleton ..... 101

#### COUNCILS

Dumfries and Galloway Council .....030 3333 3000  
.....www.dumgal.gov.uk  
Fault reporting (potholes/street-lights etc.....030 3333 3000  
Langholm Town Hall/Library .....013873 80255  
Dumfries and Galloway bus timetables  
www.dumgal.gov.uk/timetables  
Scottish Borders Council . 0330 100 1800  
out of hours 01896 752 111  
Scottish Borders bus timetables  
.....www.scotborders.gov.uk

#### UTILITIES

Scottish Water .....0800 0778 778  
.....www.scottishwater.co.uk  
Scottish Power .....105  
.....www.scottishpower.co.uk  
Scottish Gas emergency .. 0800 111 999  
National Rail enquiries ..... 03457 484 950  
.....www.nationalrail.co.uk  
Floodline SEPA .....03000 996 699  
.....www.sepa.org.uk  
BEAR Scotland (A7) .....0800 0281414  
.....www.bears Scot

#### POST OFFICES

Newcastleton 013873 75361  
Canonbie ...013873 71348  
Rowanburn 013873 71542

#### HOSPITALS

D&G Royal Infirmary .....01387 246246  
Cumberland Infirmary .....01228 523444  
Borders General Hospital 01896 826000  
Thomas Hope Hospital .....013873 80417

#### DOCTORS

Langholm ..013873 83100  
Newcastleton 013873 75100  
Canonbie ...013873 71313  
NHS24 .....111

#### CHURCHES

Langholm, Eskdalemuir Ewes and Westerkirk Parish churches  
Session Clerks  
Jackie Henderson/Aileen Cavers 07902 718985  
Canonbie United Parish church  
Liddesdale Parish church  
Session Clerk..013873 25255

#### SCHOOLS

Langholm Primary .....013873 80900  
Langholm Academy .....013873 80418  
Newcastleton .....013873 75240  
Canonbie .....013873 71336

#### CHEMISTS

Davidson Chemist, Langholm .....013873 80220  
Monday to Friday  
8.45am -1pm; 2pm-5.30pm.  
Saturday 8.45am-12.30pm.  
Boots Pharmacy, Longtown .....01228 792859  
Monday-Friday 9am - 6pm.  
Saturday 9am-5pm.

## Special Occasion?.....tell the world!

**HAPPY 60TH!**  
**GEORGE**  
with love from  
**A, J, K & P**

It's a BOY!

**JENKINS**  
Kaye and Stephen are proud to announce the arrival of their first child  
**OWEN JAMES**  
Born on 1st March 2025  
first grandchild for Jean & Steve and Carol and Tony. Special thanks to all concerned.

**L**  
Congratulations **ANDREW BROWN** on passing your driving test at last!!  
love from Mum & Dad

Happy Ruby Anniversary  
Congratulations to **JEAN & JOE JAMIESON** married in Eskdalemuir Church 14th April 1985  
love from all the family

Let us know if you have something to celebrate.....  
Births  
Birthdays  
Engagements  
Graduations  
Anniversaries  
Passing your Driving Test  
.....anything really!

Both families are delighted to announce the engagement of  
**CARLA JONES & JOHN DEANS**  
on 1st March 2025  
here's wishing you both all the love and luck in the world!

Send details to:  
alan@eladvertiser.co.uk

**Eskdale & Liddesdale**  
Advertiser

drop in to the office  
or call us on 013873 80012

# Sports News

Thursday February 12, 2026

NEXT SCHEDULED FIXTURES

FRIDAY 13th FEBRUARY

SATURDAY 28th FEBRUARY

Sponsored by **KELSO RACES** 01573 221221 | info@kelso-races.co.uk



**KELSO RACES**  
A WARM BORDERS WELCOME

## Emirates a second home for Langholm athletes

### Athletics

By Calum Graham

Four pupils from Langholm Academy travelled to the Emirates Arena in Glasgow last Wednesday, with some returning on Thursday to compete in the Scottish Schools Athletics Championships.

**Evelyn B** – S4 Pupil Evelyn Bell aged 14 was competing in her first indoor event in the Under 16 60m. She progressed to the Semi-Final with a time of 8.71 seconds. In the semi-final she ran a quicker time of 8.70 seconds which although not enough to make the final, finished in a very good 20th position from 53 starters.

**Mollie P** – S3 Pupil Mollie Phillips aged 14 was also competing in her first indoor event and her first time on the circular banked running track in the Under 16 300m. With only four heats, only 6 athletes would progress to the final. Mollie ran a very good time of 47.28 seconds and although not progressing to the final, finished in 15th place from 24 starters.

**Aoiffion MB** – S2 Pupil Aoiffion McVittie-Brangan, aged only 13, was competing



ACE ATHLETES: Jessica, Evelyn, Mollie and Aoiffion

PODIUM PLACE: Aoiffion, left, won a bronze medal

in the U16 60m on Wednesday and 200m on Thursday. In the 60m which included 53 starters, she won her heat with a time of 8.20 to progress to the semi-final. She then went on to win her semi-final in a time of 8.17 seconds. In a very close final, 2nd and 3rd place athletes crossed the finish line together in a time of 8.04 seconds with Aoiffion awarded the bronze medal, missing out on the silver by 1000th of a second in a photo finish.

In the Under 16 200m on the Thursday, she won her heat comfortably with a time of 26.40 seconds to qualify as 2nd fastest qualifier. She then won her semi-final in a time of 26.04 seconds to progress into the

final six athletes from 40 starters. In a very exciting final that went down to the wire, Aoiffion missed out on the gold medal by 0.08 seconds to Glasgow School of Sport Athlete Olivia F however, she set a new personal best time of 25.59 seconds to collect the silver medal.

Aoiffion also received a timely boost ahead of the championships when she found out a recent 60m time she ran in Manchester in December moved her up to second place on the all-time ranking list for athletes in her year group in Scotland.

**Jessica** – S1 Pupil Jessica Cuthbert aged 12 was competing in her first Scottish Schools

Track and Field event and only her second indoor event. She made an early start to compete in the very first event of the day, the Under 14 1200m where she ran a time of 4:25.34. Although this wasn't fast enough to make the final, she finished in a respectable 23rd place. She then moved on to the Under 14 60m where she qualified from her heat with a new personal best time of 8.77 seconds. In the second of three semi-finals, Jessica ran another personal best time of 8.75 seconds just being edged out of a place in the final, finishing in ninth place from 48 starters. Well done girls, some great achievements and new worthwhile experience

## Timeform Chase at Kelso Races

### Horseracing

Elvis Mail is expected to bid for a seventh Kelso success in Friday's £22,500 feature race.

Trained by Nick Alexander, the twelve-year-old is set to be partnered by Hawick jockey Bruce Lynn in the Racing's Best Ratings With Timeform Handicap Chase over 2m 7f. The trip will hold no fears for the Kinneston raider as he has won twice at the Berry Moss venue over 3m 2f.

And Lynn has been on board for five of Elvis Mail's ten career wins including two memorable back-to-back strikes in the valuable Edinburgh Gin Chase at Kelso's late October fixture.

Rivals to Elvis Mail include Donald McCain-trained top-weight Minella Drama and Tom Lacey's Cruz Control, who are both previous course winners.

The Every Horse, Every Race at timeform.com Novices' Limited Handicap Chase is usually a hot event and it was won last year by subsequent Cheltenham Festival scorer Myretown.

A bout of wind surgery has resulted in plenty of improvement from Jimmy Fyffe-owned Throatlash, who has won three



from three since the operation to improve his breathing.

He has been raised a further 5lbs for an all-the-way success at Haydock in mid-January and he is unlikely to have reached the ceiling of his progression yet.

After 21-months off, Milcree, trained by Nicky Richards, returned on a victorious note on his chasing debut at Ayr in early January and he could go close again.

The card gets underway with the Albert Bartlett Triple Crown Series Conditional Jockeys' Handicap Hurdle.

Two-time course and distance winner Grand Voyage, trained at Selkirk by Stuart Coltherd, has slipped below his late winning mark and showed a bit more of his old sparkle with an encouraging third at Ayr a couple of weeks ago.

## No show from No. Berwick

### Rugby

The rearranged match against North Berwick RFC, scheduled for last Saturday was further postponed when the visitors were unable to get a team to travel to Milntown.

They were deducted three-league points due to insufficient players. This East League 1 match has now been rescheduled for Saturday 21st February and, fingers crossed, North Berwick will

make the journey to get the match played.

Langholm now have three home matches and one away match to play in the league. Apart from the rescheduled North Berwick match, there is a match against Murrayfield Wanderers on 28th February and another rearranged match against Broughton RFC on 28th March. The away match, scheduled for 21st March is also against Broughton in Edinburgh. Langholm

currently sit fourth in East League 1 on 32 points, six points behind Murrayfield Wands but with a match in hand. With Dunbar and Haddington racing away at the top of the table, third place in the league is very much up for grabs for Langholm.

For the match on 28th February there will be a pre-match lunch and a disco/karaoke in the evening. See the rugby board and club social media for details.



RIGHT: Current club captain Chris Tait and 1st team players Bailey Donaldson and Callum Henderson with former Miss Universe Great Britain Amy Willerton at Langholm Sevens 2014



**E&L**  
**SPORT**

